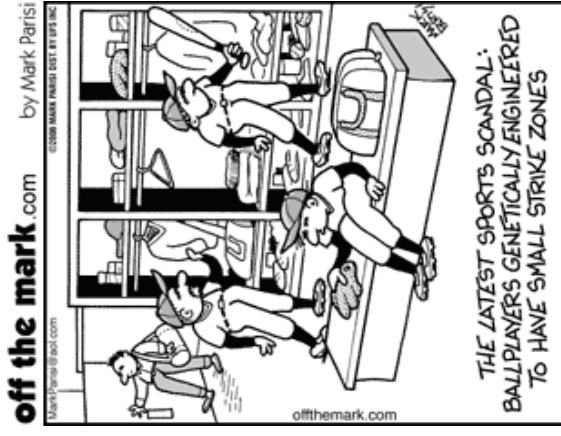


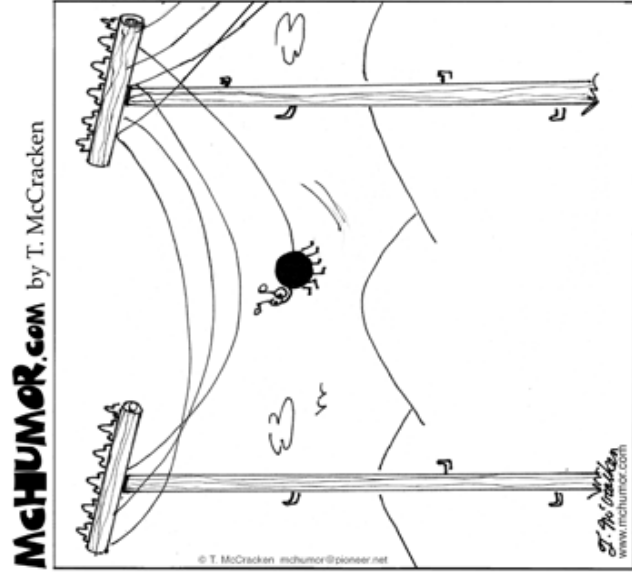
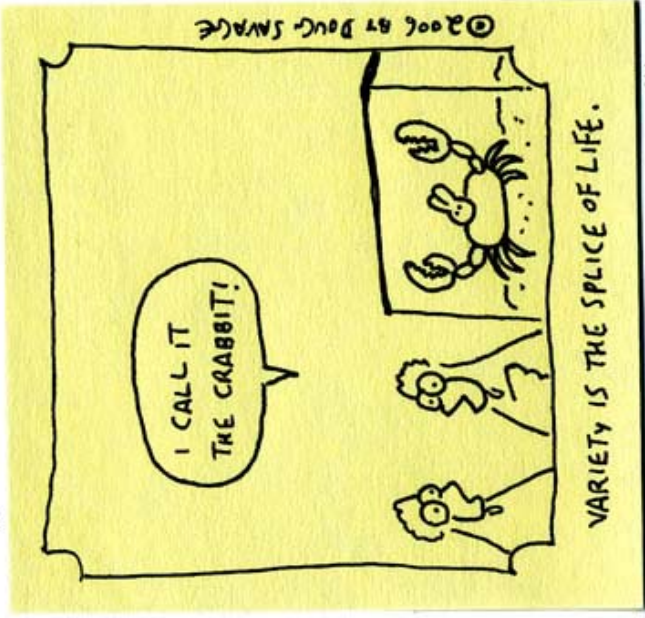
## Genetic Engineering: Freaky Science?

In the space below, using **one** of the cartoons as reference as well as information gained from Bill Nye: Genetically Modified Foods, complete the following (on the back of this sheet), using **FULL SENTENCES**.

1. Identify and explain something in the cartoon that has been **changed or modified** through genetic engineering.
2. Identify one thing in the cartoon that is **true (or realistic)** based on what you know about genetic engineering.
3. Identify one thing in the cartoon that has been **exaggerated** or is **inaccurate**, based on what you know about genetic engineering.



### Savage Chickens



A genetically bred super spider that spins utility lines.